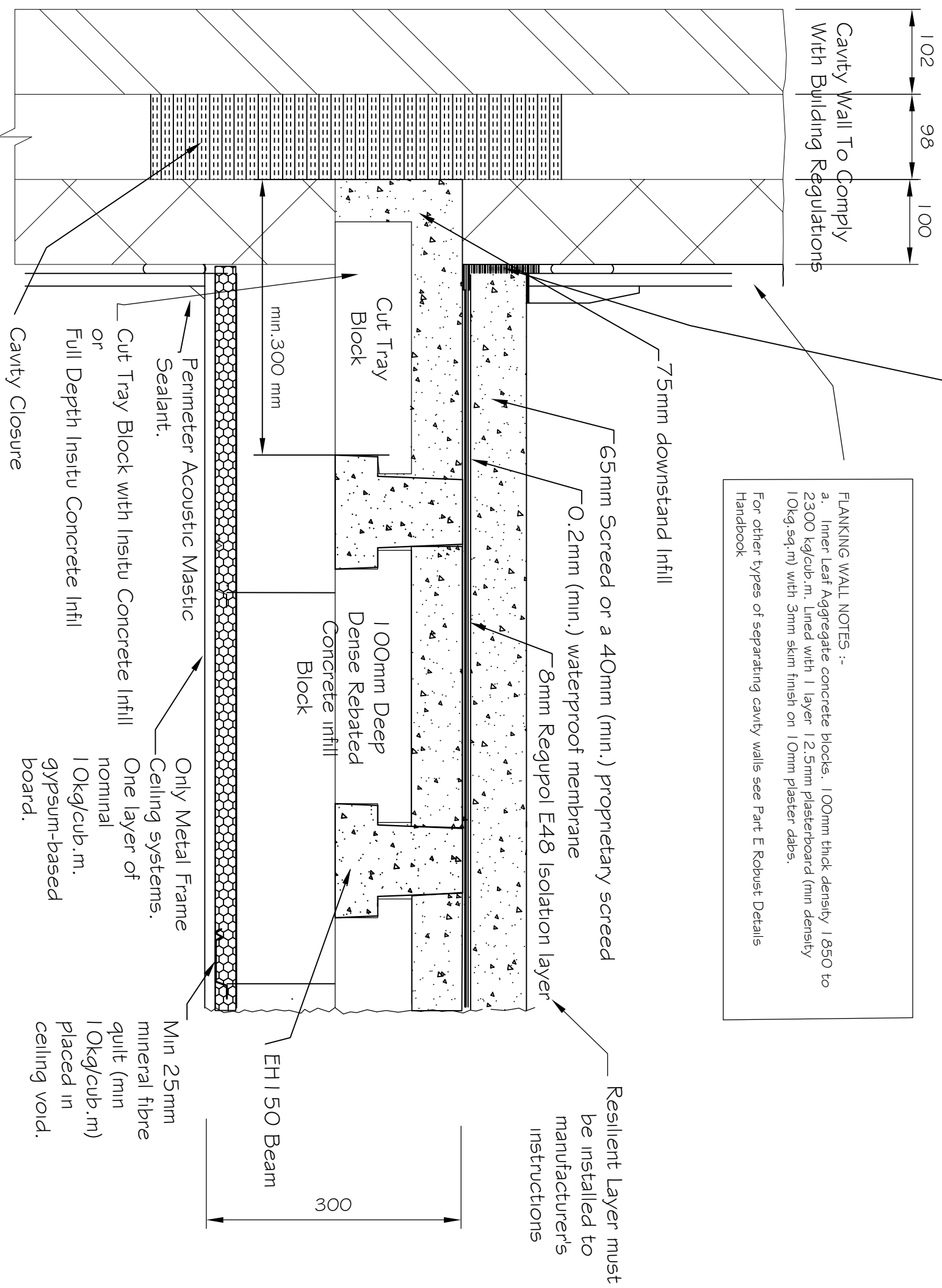


8mm Regupol E48 Isolation layer lapped under wall linings and skirtings.

FLANKING WALL NOTES :-  
 a. Inner Leaf Aggregate concrete blocks. 100mm thick density 1850 to 2300 kg/cub.m. Lined with 1 layer 12.5mm plasterboard (min density 10kg.sq.m) with 3mm skim finish on 10mm plaster dabs.  
 For other types of separating cavity walls see Part E Robust Details Handbook



**NOTES**

- FFT 1 : Deep resilient composite batten system with 20mm levelling screed
  - FFT2 : Resilient cradle and batten system with 25mm mineral fibre quilt (min 10kg/cub.m.)
  - FFT3: Standard resilient composite batten system with 20mm levelling screed
- Treatment must achieve a minimum laboratory performance of  $R_d \sim L_w = 17dB$
- Resilient Layer must be installed in accordance with the manufacturer's instructions.  
 ALL Perimeter edges must be turned up to isolate the screed.

**REVISIONS**

no.	date	description
A	06.02.2009	EDGING_NOTE_ADDED FLANKING_WALL_NOTES_ALTERED

SCALE	DATE
NTS	20,12,2006

ENGINEER

ARCHITECT

JOB  
 PART\_E  
 ROBUST\_DETAIL  
 SEPARATING\_FLOOR\_E-FC-6  
 TITLE  
 SECTION\_\_1-1

**CARTER**  
**CONCRETE**

Britons Lane  
 Sherringham  
 Norfolk  
 NR26 8TP  
 Tel No (01263) 823434  
 Fax No (01263) 825678

DRIVING NO.  
 RSD/1-1/EH150/03

Separating Floor  
 ROBUST DETAIL E-FC-6  
 (Sound Requirements)

min. 300 mm

300

Perimeter Acoustic Mastic Sealant.  
 Cut Tray Block with Insitu Concrete Infill  
 or  
 Full Depth Insitu Concrete Infill  
 Cavity Closure

Only Metal Frame  
 Ceiling systems.  
 One layer of nominal 10kg/cub.m. gypsum-based board.

Min 25mm mineral fibre quilt (min 10kg/cub.m) placed in ceiling void.

Resilient Layer must be installed to manufacturer's instructions

75mm downstand Infill

65mm Screed or a 40mm (min.) proprietary screed  
 0.2mm (min.) waterproof membrane

8mm Regupol E48 Isolation layer

100mm Deep Dense Rebated Concrete Infill Block

EHI 50 Beam

Cavity Closure

102  
 98  
 100  
 Cavity Wall To Comply With Building Regulations